

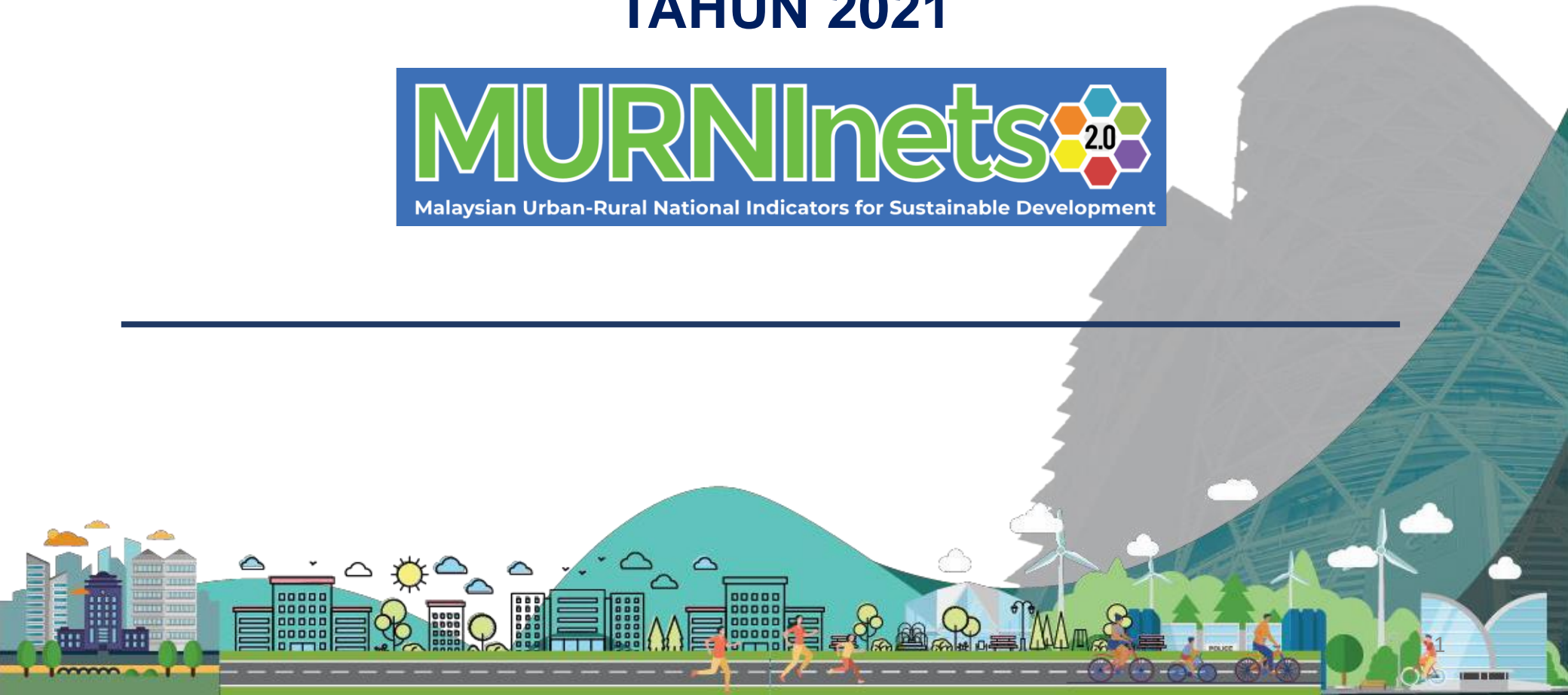


PLANMalaysia
Jabatan Perancangan Bandar dan Desa (JPBD)



LAPORAN NEGERI PERAK TAHUN 2021

MURNInets 2.0
Malaysian Urban-Rural National Indicators for Sustainable Development



PENCAPAIAN KEMAMPUAN BANDAR MENGIKUT DIMENSI NEGERI PERAK



PIHAK BERKUASA TEMPATAN	SKOR DIMENSI						INDEKS KEMAMPUAN	
	D1	D2	D3	D4	D5	D6	2020	2021
MB Ipoh	0.58	1.00	0.64	0.96	0.75	1.00	86.90%	80.61%
MP Kuala Kangsar	0.58	0.88	0.70	0.88	0.68	0.81	90.64%	74.80%
MP Manjung	0.58	1.00	0.73	0.88	0.76	0.85	88.41%	79.52%
MP Taiping	0.75	1.00	0.96	0.83	0.92	0.80	90.83%	88.11%
MP Teluk Intan	0.58	0.88	0.99	0.92	0.73	0.78	75.65%	81.27%
MD Batu Gajah	0.88	1.00	0.84	0.83	0.79	0.80	83.79%	86.70%
MD Gerik	0.58	0.92	0.78	0.79	0.90	0.96	86.63%	81.01%
MD Kampar	0.58	0.92	0.96	0.79	0.73	1.00	82.22%	82.74%
MD Kerian	0.75	1.00	0.90	0.71	0.75	0.96	86.13%	85.23%
MD Lenggong	0.83	1.00	0.66	0.75	0.71	0.93	81.47%	81.65%
MD Pengkalan Hulu	1.00	1.00	0.80	0.96	0.81	0.78	73.64%	89.94%
MD Perak Tengah	0.75	0.92	0.61	0.92	0.71	0.89	74.68%	79.15%
MD Selama	0.83	0.79	0.64	0.79	0.49	0.74	82.54%	72.38%
MD Tanjong Malim	0.58	0.92	0.94	0.79	0.70	0.74	75.47%	78.63%
MD Tapah	0.83	0.88	0.97	0.75	0.68	0.85	85.41%	83.96%
PERAK	0.71	0.94	0.81	0.84	0.74	0.86	82.96%	81.71%

10 PBT

5 PBT

PETUNJUK

D1	Ekonomi Berdaya Saing
D2	Kualiti Persekitaran Mampan
D3	Komuniti Sejahtera
D4	Gunatanah dan Sumber Asli Optimum
D5	Infrastruktur dan Pengangkutan Efisien
D6	Urus Tadbir Efektif

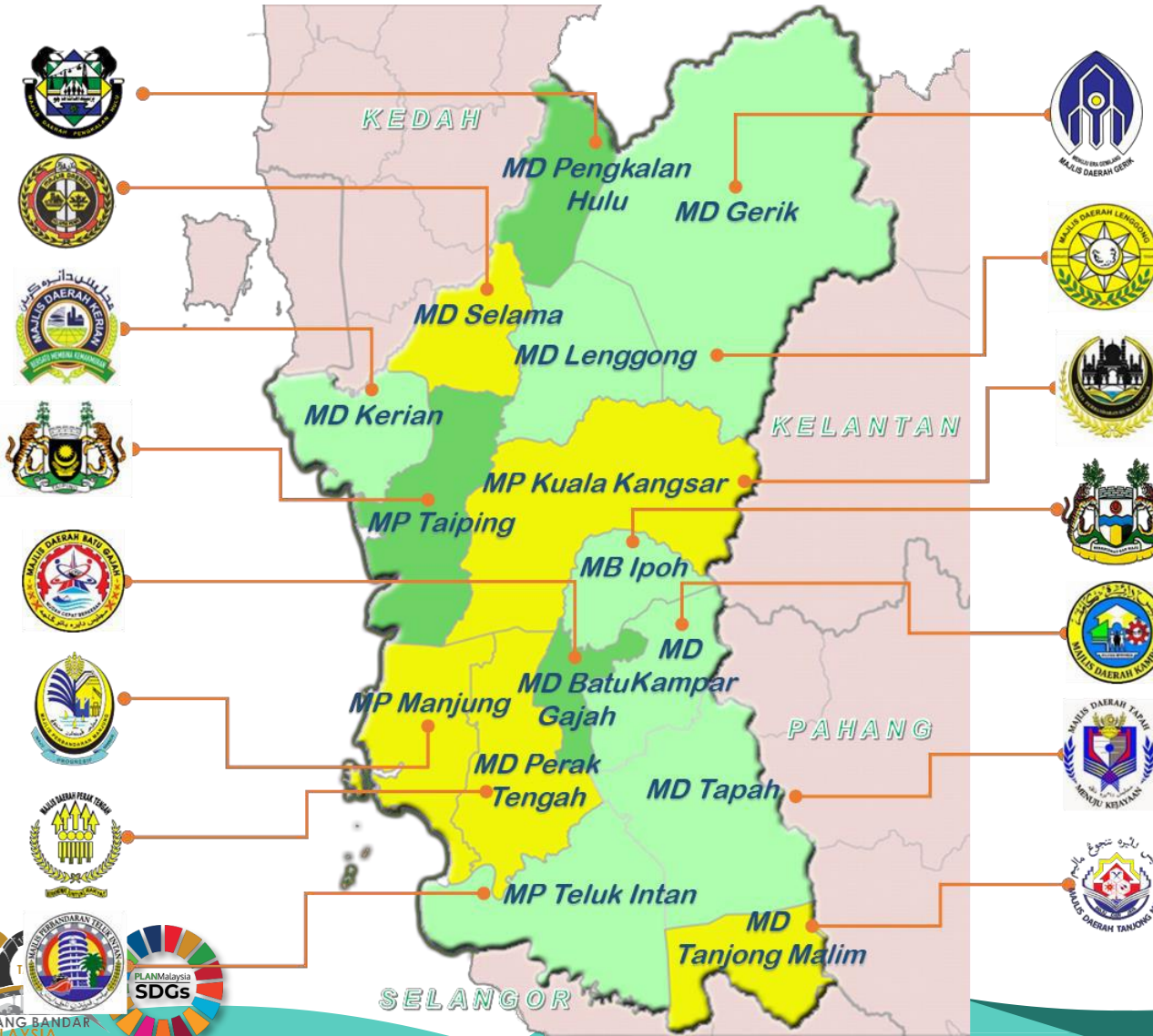
MAMPAN
(80% Ke Atas)

SEDERHANA MAMPAN
(50%-79%)

KURANG MAMPAN
(49% Ke Bawah)

PENCAPAIAN KEMAMPAHAN BANDAR MENGIKUT DIMENSI

STATUS KEMAMPAHAN BANDAR NEGERI PERAK



MAMPAM	10	67%
SEDERHANA MAMPAM	5	33%
KURANG MAMPAM	0	0%
Jumlah PBT	15	100%

PETUNJUK

- Mampam (Melebihi 80%)**
PERATUS SKALA MAMPAM

>95 86-94 80-85
- Sederhana Mampam (50%-79%)**
- Kurang Mampam (Kurang 49%)**

